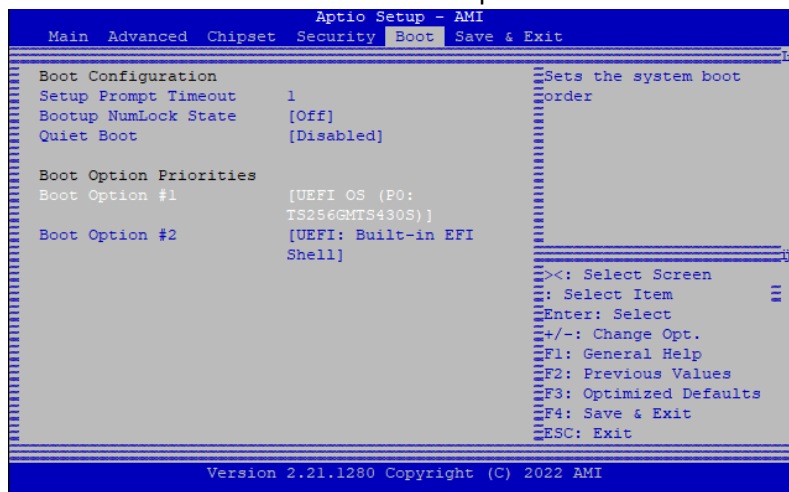


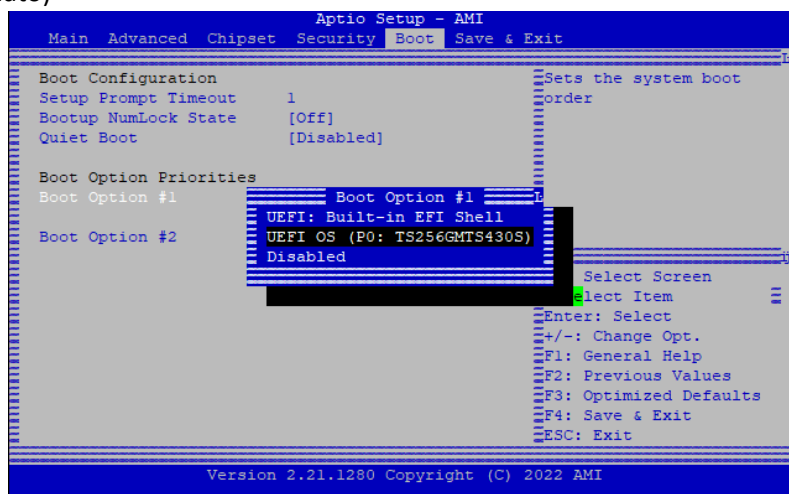
Modello: JET4 – 4 porte 2,5 GbE

Per impostare l'ordine di boot, seguire le seguenti istruzioni:

1. Entrare nel BIOS premendo il tasto **canc** appena avviato l'apparato
2. Spostarsi nella scheda **Boot** e selezionare la voce **Boot Option #1**:



3. Selezionare il disco su cui è presente il sistema operativo (sono visibili solo i dischi con un sistema operativo installato)

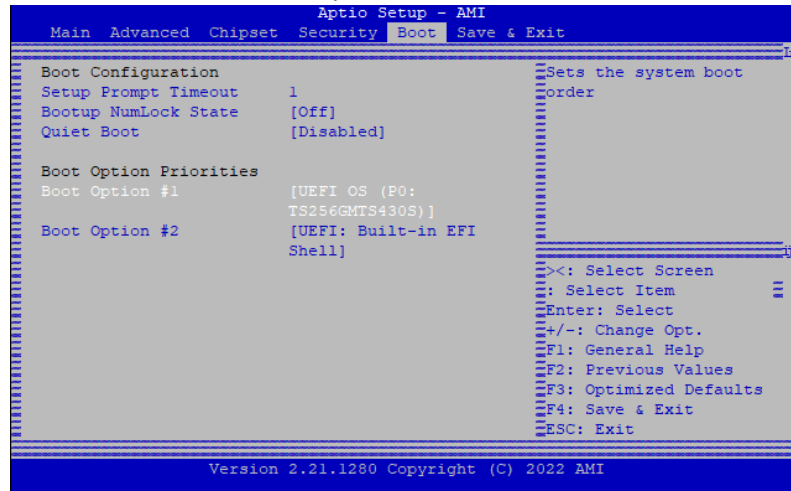


4. Salvare le modifiche e riavviare

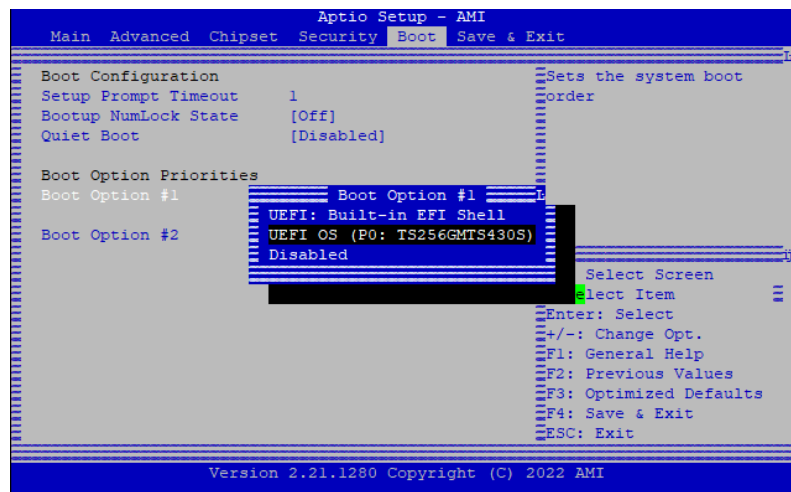
Model: JET4 – 4 ports 2,5 GbE

To set the boot order, follow these instructions:

1. Enter the BIOS by pressing the delete key as soon as the device starts up
2. Move to the Boot tab and select the Boot Option #1:



3. Select the disk where the operating system is located (only disks with an installed operating system are visible)



4. Save the changes and restart.