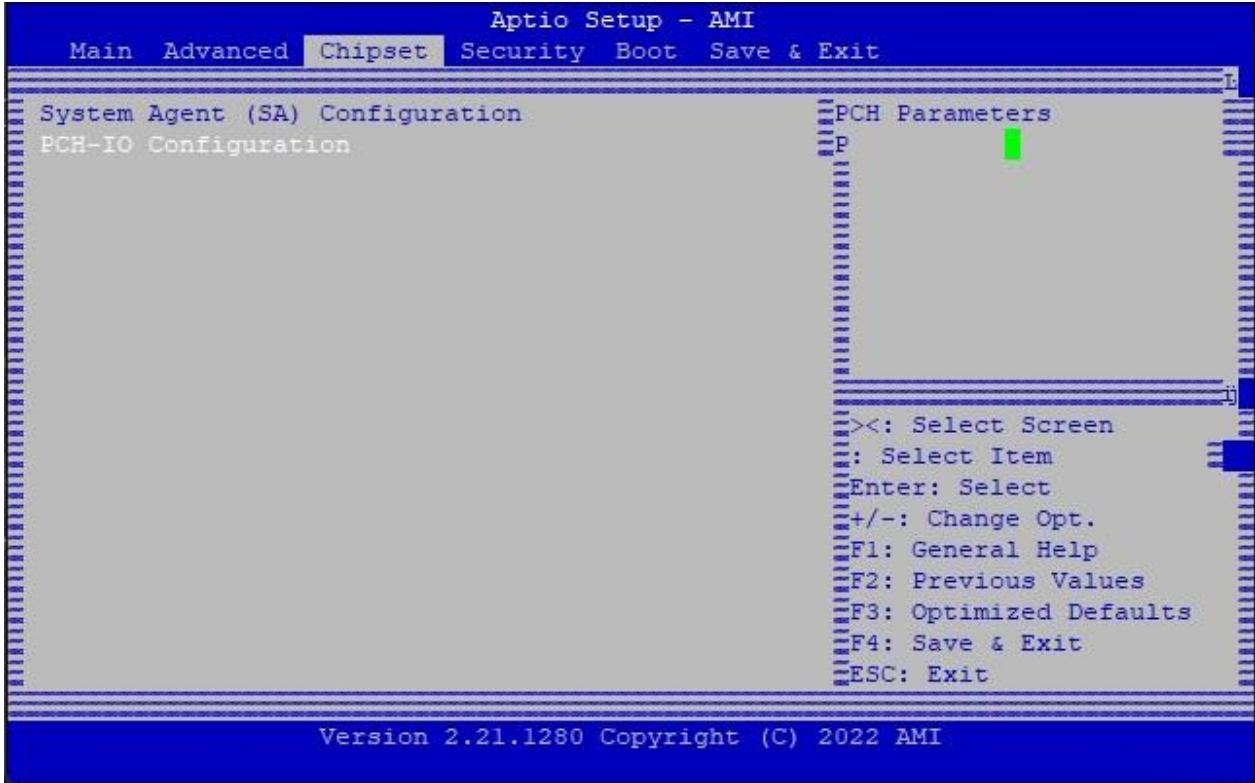


## How to enable Always on

**Hardware model: nBox Mini JET4 – 2,5 GbE**

Enter BIOS by pressing the delete key as soon as the device starts, go to the **Chipset** tab and select the **PCH-IO Configuration**



Select **System State after Power Failure**



Select **Always on**.

The system will start automatically after being reconnected to the power supply.

