

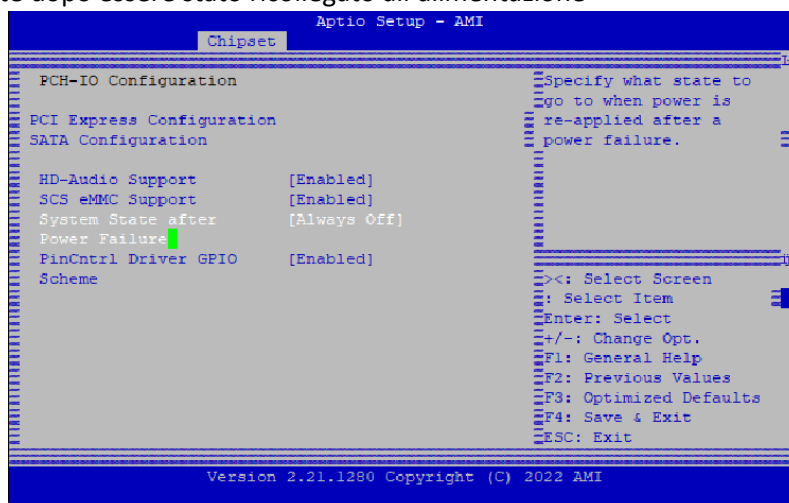
## Modello: JET4 – 4 porte 2,5 GbE

Per impostare il dispositivo in modalità sempre acceso, seguire le seguenti istruzioni:

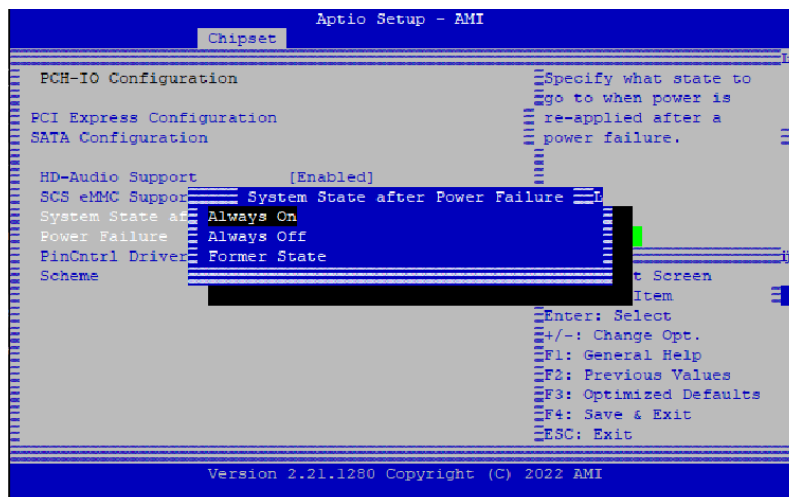
1. Entrare nel BIOS premendo il tasto **canc** appena avviato l'apparato
2. Spostarsi nella scheda **Chipset** e selezionare la voce **PCH-IO Configuration**



3. Scegliere il comportamento desiderato. Impostando **always on** il sistema si avvierà automaticamente dopo essere stato ricollegato all'alimentazione



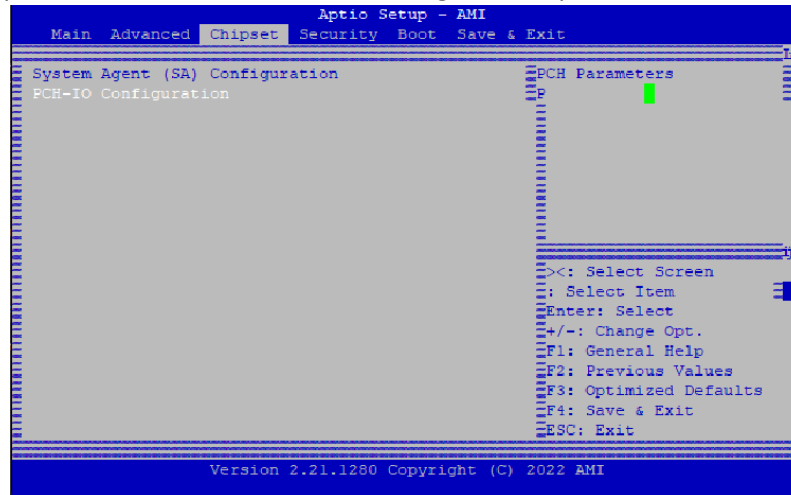
4. Selezionare **System State after Power Failure**



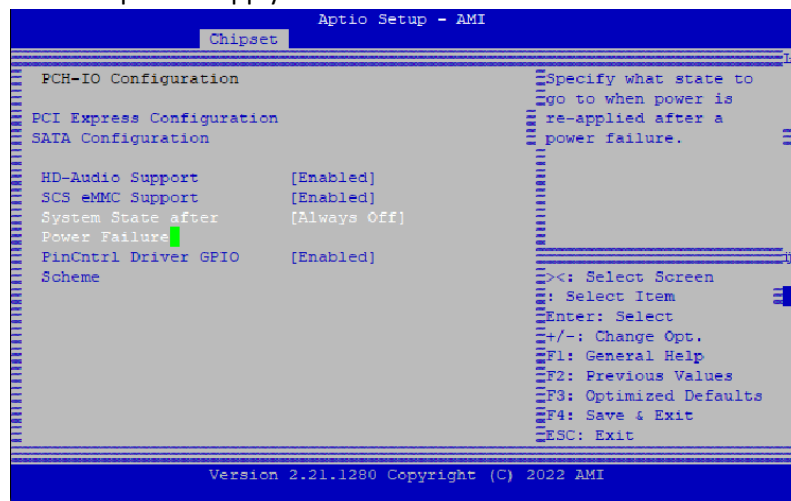
## Model: JET4 – 4 ports 2,5 GbE

To set your device to always-on mode, follow these instructions:

1. Enter the BIOS by pressing the delete key as soon as the device starts up
2. Move to the Chipset tab and select the PCH-IO Configuration option.



3. Choose the desired behavior. By setting it to always on, the system will automatically start up after being reconnected to the power supply.



4. Select System State after Power Failure.

