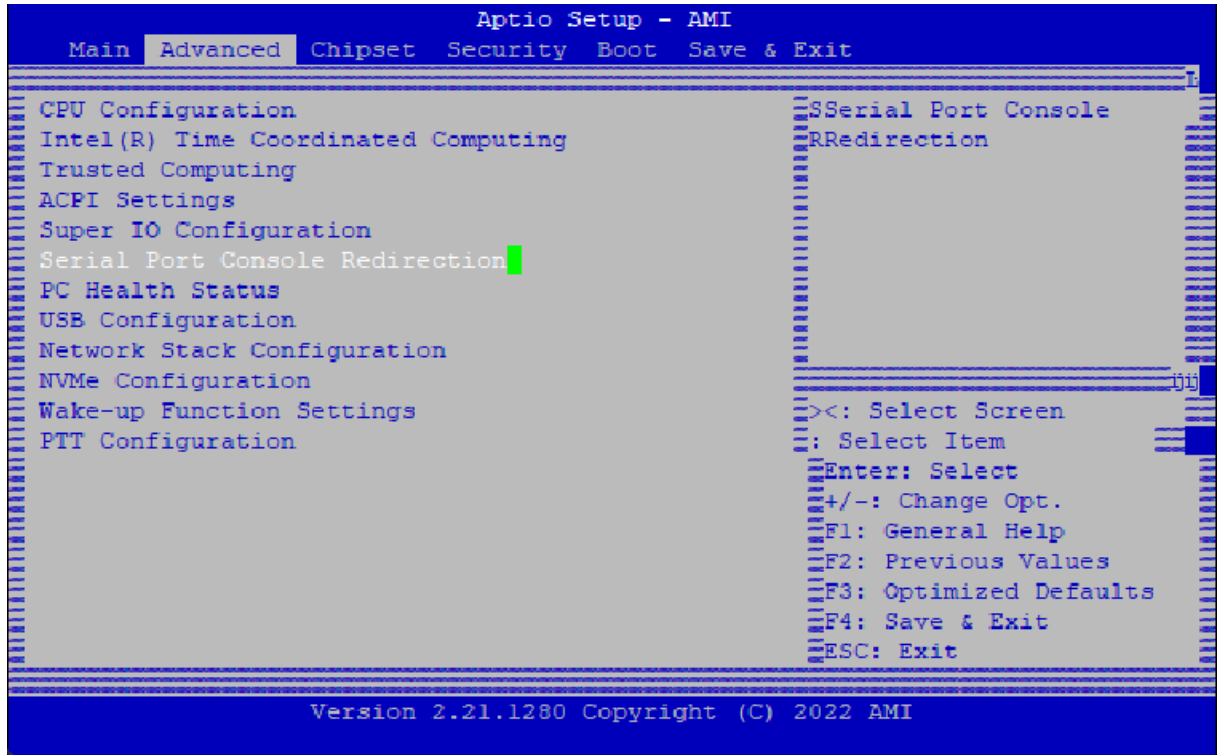


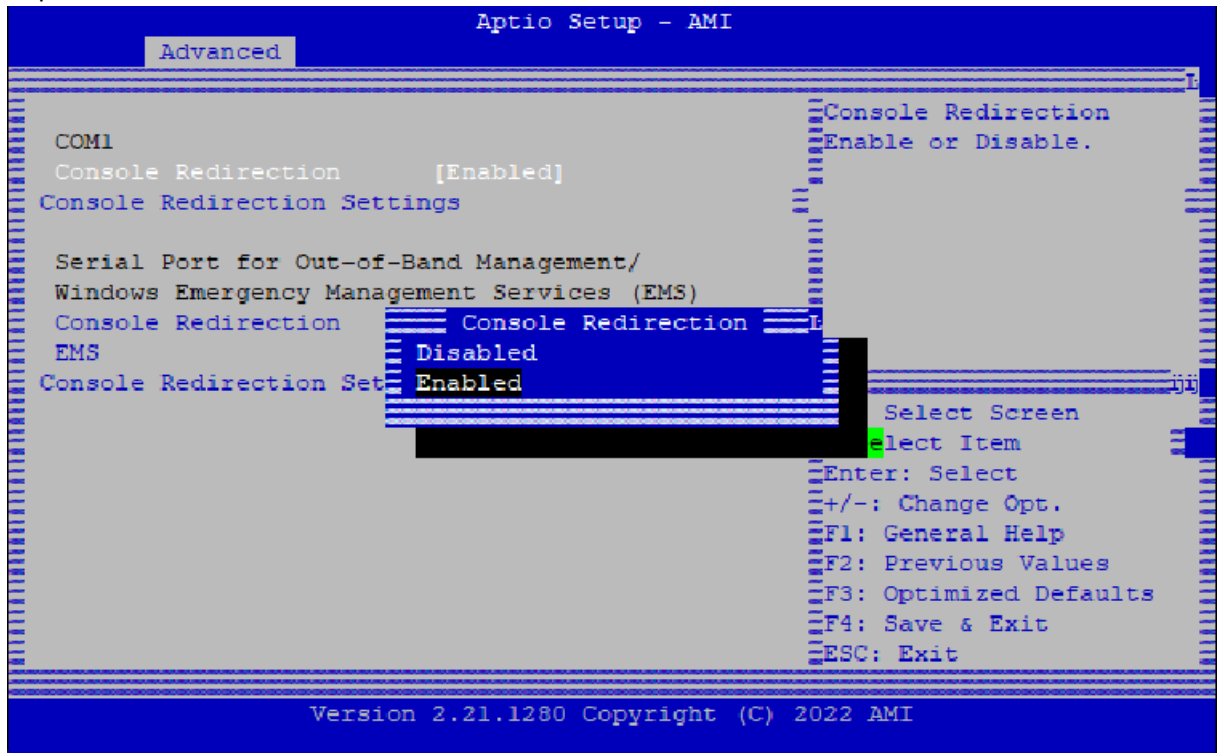
Modello: Compact/Appliance Small UTM 4 – 6 porte 2,5 GbE

Come abilitare la redirectione del segnale video su seriale (COM)

1. Entrare nel BIOS premendo il tasto **canc** appena avviato l'apparato
2. Spostarsi nella scheda **Advanced** e selezionare la voce **Serial Port Console Redirection**



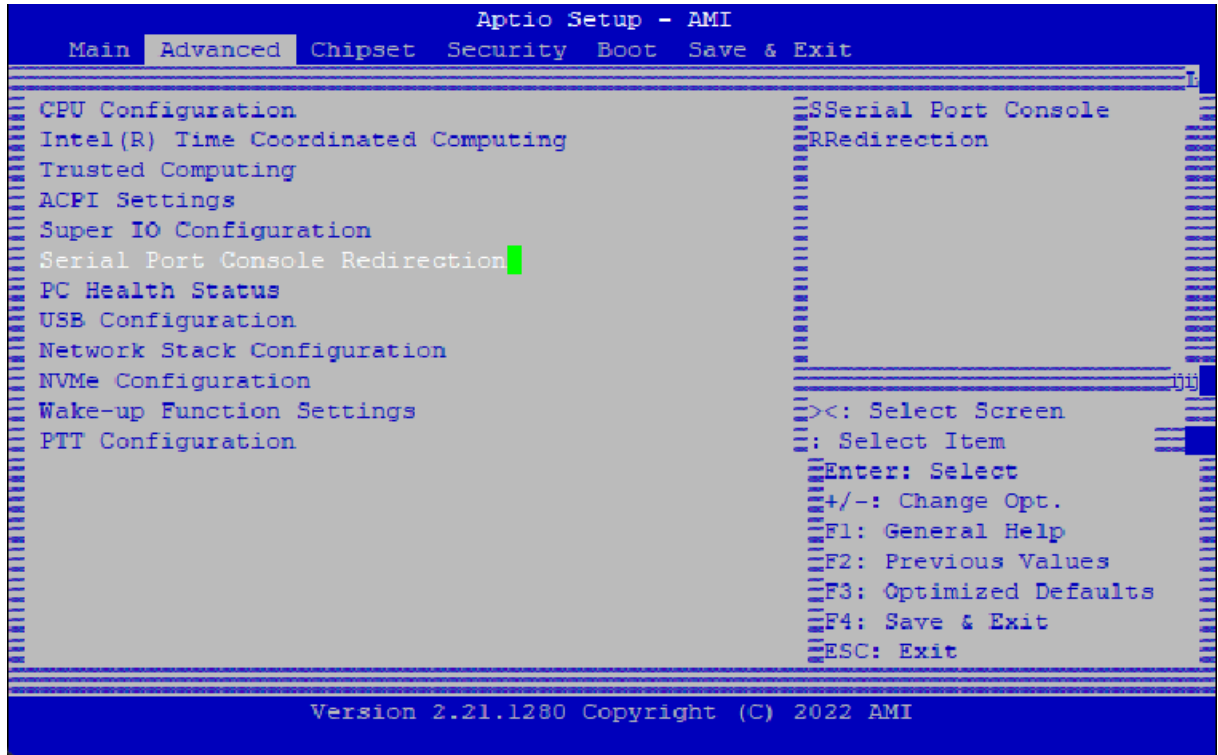
3. Impostare il valore di **Console Redirection** su **Enabled**



Model: Compact/Appliance Small UTM 4 – 6 ports 2,5 GbE

How to enable video signal redirection on serial (COM)

1. Enter the BIOS by pressing the delete key as soon as the device starts up.
2. Move to the Advanced tab and select the Serial Port Console Redirection option.



3. Set the Console Redirection value to Enabled.

